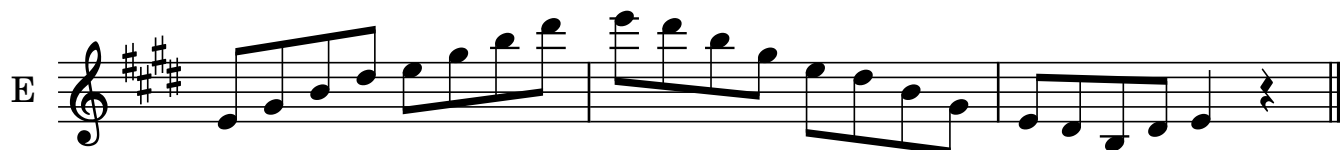
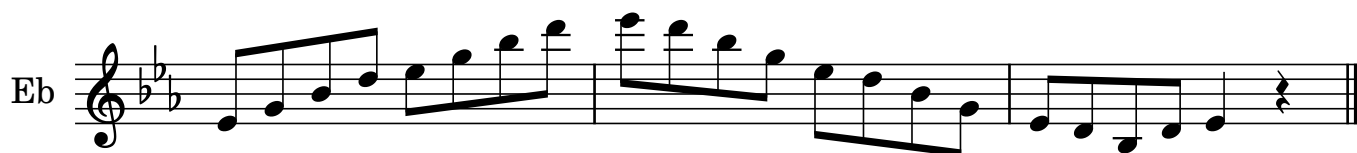
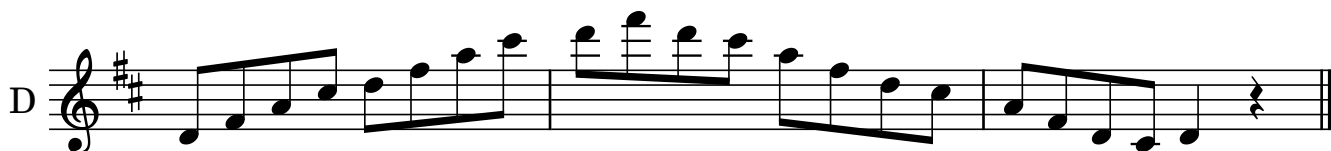
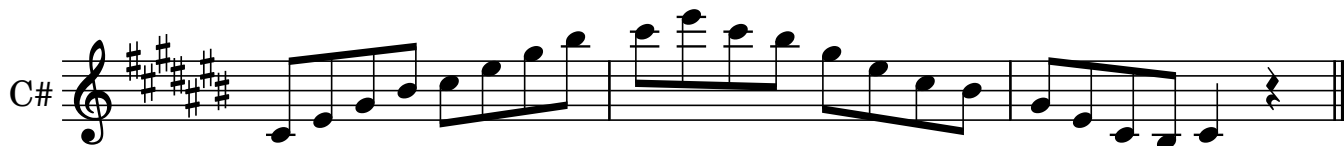


Seventh Chords

Major Major 7th Chords



2

G

4

This musical staff is for the G major key, indicated by a single sharp (F#) on the treble clef. The time signature is 4/4, with a '4' written above the staff. The melody consists of the following notes: G4 (quarter), A4 (quarter), B4 (quarter), C5 (quarter), D5 (quarter), C5 (quarter), B4 (quarter), A4 (quarter), G4 (quarter), F#4 (quarter), E4 (quarter), D4 (half), C4 (half). The staff ends with a double bar line.

Ab

This musical staff is for the Ab major key, indicated by two flats (Bb, Eb) on the treble clef. The melody consists of the following notes: Ab4 (quarter), Bb4 (quarter), C5 (quarter), D5 (quarter), Eb5 (quarter), D5 (quarter), C5 (quarter), Bb4 (quarter), Ab4 (quarter), Gb4 (quarter), F4 (quarter), Eb4 (half), Db4 (half). The staff ends with a double bar line.

A

This musical staff is for the A major key, indicated by three sharps (F#, C#, G#) on the treble clef. The melody consists of the following notes: A4 (quarter), B4 (quarter), C#5 (quarter), D5 (quarter), E5 (quarter), D5 (quarter), C#5 (quarter), B4 (quarter), A4 (quarter), G#4 (quarter), F#4 (quarter), E4 (half), D4 (half). The staff ends with a double bar line.

Bb

This musical staff is for the Bb major key, indicated by two flats (Bb, Eb) on the treble clef. The melody consists of the following notes: Bb4 (quarter), C5 (quarter), D5 (quarter), Eb5 (quarter), F5 (quarter), Eb5 (quarter), D5 (quarter), C5 (quarter), Bb4 (quarter), Ab4 (quarter), Gb4 (quarter), F4 (half), Eb4 (half). The staff ends with a double bar line.

B

This musical staff is for the B major key, indicated by four sharps (F#, C#, G#, D#) on the treble clef. The melody consists of the following notes: B4 (quarter), C#5 (quarter), D#5 (quarter), E5 (quarter), F#5 (quarter), E5 (quarter), D#5 (quarter), C#5 (quarter), B4 (quarter), A#4 (quarter), G#4 (quarter), F#4 (half), E4 (half). The staff ends with a double bar line.